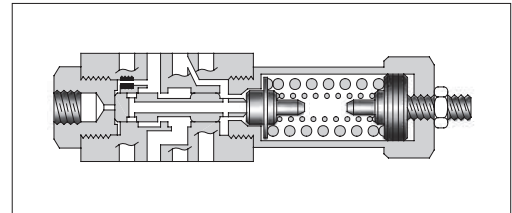
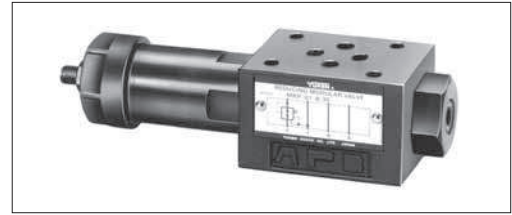


Reducing Modular Valves

Specifications

| Model Numbers | Max. Operating Pressure MPa(PSI) | Max. Flow L/min (U.S.GPM) |
|---|-------------------------------------|------------------------------|
| MRP-01-* -30/3090 MRA-01-* -30/3090 MRB-01-* -30/3090 | 31.5 (4570) | 35 (9.25) * |

★ If the pressure is set below 1.9 MPa (280 PSI), the maximum flow is limited. See the minimum adjustment pressure vs. maximum flow characteristics and during use, stay within the shaded zone on the graph.



Model Number Designation

| F- | MRP | -01 | -B | -30 | * |
|--|---|------------|--|------------------|-----------------|
| Special Seals | Series Number | Valve Size | Pres. Adj. Range MPa (PSI) | Design Number | Design Standard |
| F: Special Seals for Phosphate Ester Type Fluids (Omit if not required) | MRP: Reducing Valve for P-Line MRA: Reducing Valve for A-Line MRB: Reducing Valve for B-Line | 01 | B: *-7 (*-1020) *1 C: 3.5-14 (510-2030) H: 7-21 (1020-3050) | 30 | Refer to ★2 |

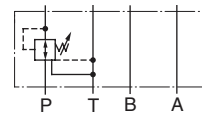
★1. See the "Minimum Adjustment Pressure vs. Maximum Flow" of the next page for the item marked *.

★2. Design Standards: None Japanese Standard "JIS" and European Design Standard
90 N. American Design Standard

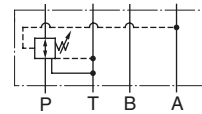
Instructions

- The minimum adjustment pressure equals the value obtained from the minimum adjustment pressure characteristics plus the tank line back pressure of the next page. This back pressure should include the value of the T-line pressure drop characteristics of the valves stacked to the base plate side of the modular valve.
- To make pressure adjustment, loosen the lock nut and turn the pressure adjustment screw clockwise or anti-clockwise. For an increase of pressure, turn the screw clockwise. Be sure to re-tighten the lock nut firmly after making adjustment to the pressure.

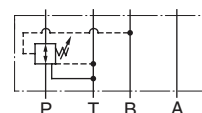
Graphic Symbols



MRP-01



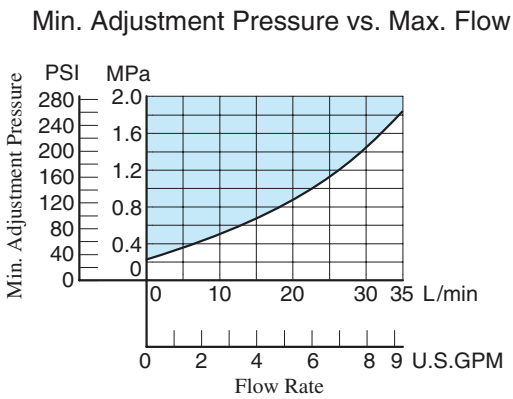
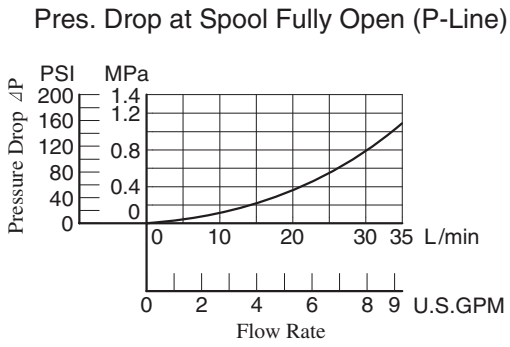
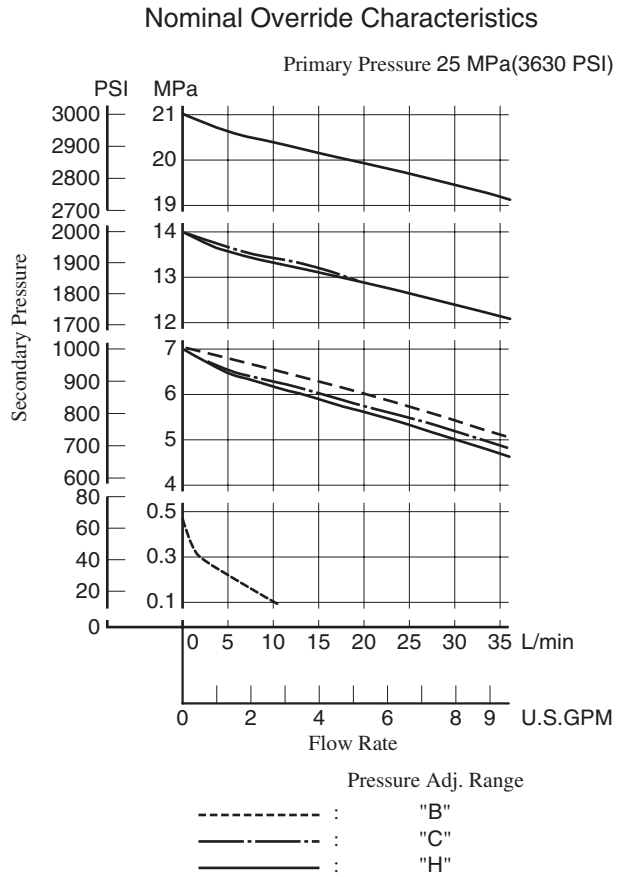
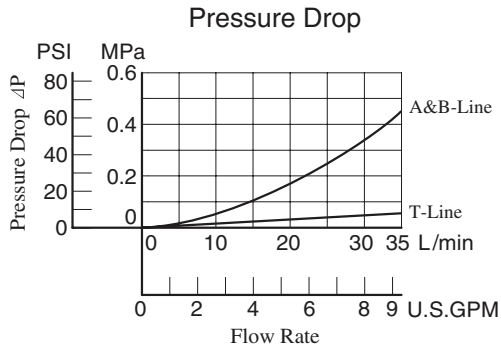
MRA-01



MRB-01

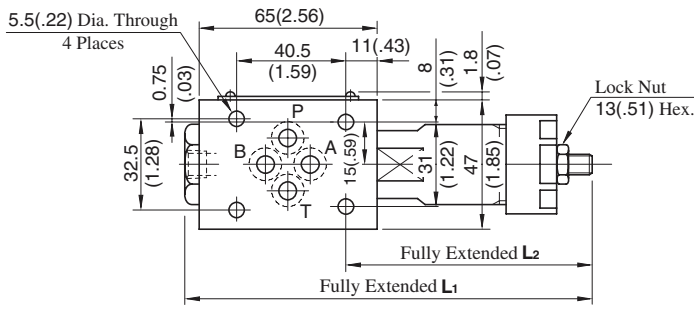
Typical Performance Characteristics

Hydraulic Fluid: Viscosity 35 mm²/s (164 SSU), Specific Gravity 0.850



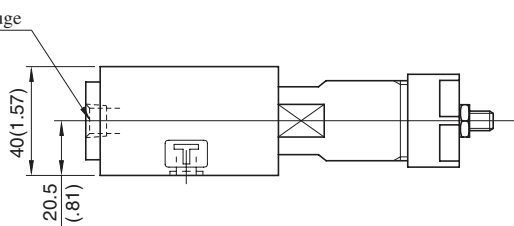
MRP-01-*-30/3090
 MRA-01-*-30/3090
 MRB-01-*-30/3090

**DIMENSIONS IN
 MILLIMETRES (INCHES)**

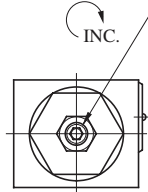


| Model No. | L1 | L2 |
|-------------------------------------|--------------|--------------|
| MR*-01- ^B / _C | 158 (6.22) | 92 (3.62) |
| MR*-01-H | 173.5 (6.83) | 107.5 (4.23) |

Pressure Gauge
 Connection
 "C" Thd.



Pressure Adj. Screw
 4(.16) Hex. Soc.

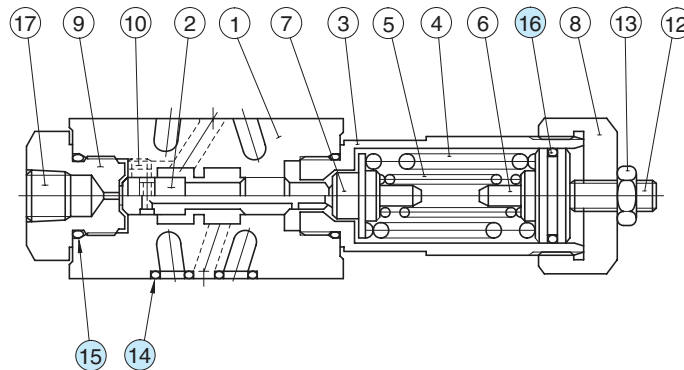


| Model Numbers | Thread Size "C" Thd. |
|---------------|-------------------------|
| MR*-01-*-30 | Rc 1/4 = 1/4 BSP.Tr |
| MR*-01-*-3090 | 1/4 NPT |

Approx. Mass.....1.1 kg (2.4 lbs.)

Spare Parts List

MRP-01-*-30/3090
 MRA-01-*-30/3090
 MRB-01-*-30/3090



List of Seals

| Item | Name of Parts | Part Numbers | Qty. | Remarks |
|------|---------------|--------------|------|---|
| 14 | O-Ring | SO-NB-P9 | 4 | Included in Seal Kit Kit No.: KS-MBP-01-30 |
| 15 | O-Ring | SO-NB-P18 | 2 | |
| 16 | O-Ring | SO-NA-P20 | 1 | |