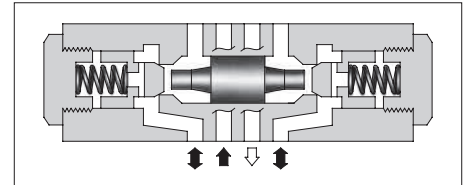


## Pilot Operated Check Modular Valves

### Specifications

Model Numbers		Max. Operating Pressure MPa (PSI)	Max. Flow L/min (U.S.GPM)
Standard	MP*-01-*-40	31.5 (4570)	35 (9.25)
Low Pilot Pressure Control Type	MP*-01-*-4001		

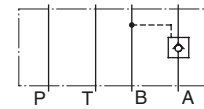


### Model Number Designation

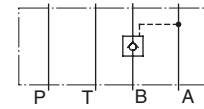
F-	MPA	-01	-2	-40	*
Special Seals	Series Number	Valve Size	Cracking Pressure MPa (PSI)	Design Number	Design Standard
<b>F:</b> Special Seals for Phosphate Ester Type Fluids (Omit if not required)	<b>MPA</b> : Pilot Operated Check Valve for A-Line <b>MPB</b> : Pilot Operated Check Valve for B-Line <b>MPW</b> : Pilot Operated Check Valve for A&B-Lines	<b>01</b>	<b>2</b> : 0.2 (29) <b>4</b> : 0.4 (58)	<b>40</b> (Standard) <b>4001</b> (Low Pilot Pressure Control Type)	Refer to ★

★ Design Standards: None ..... Japanese Standard "JIS", European Design Standard and N. American Design Standard

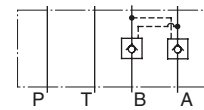
### Graphic Symbols



MPA-01



MPB-01

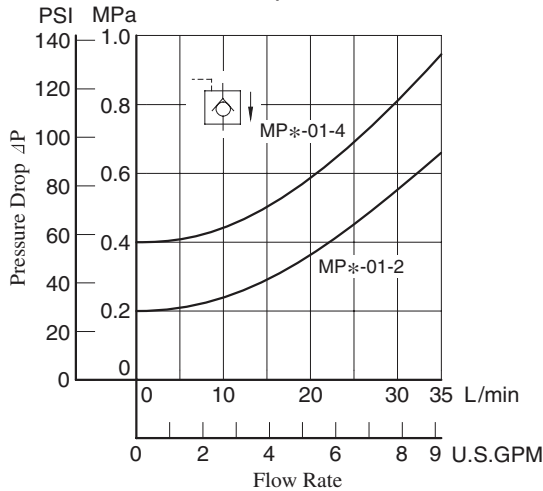


MPW-01

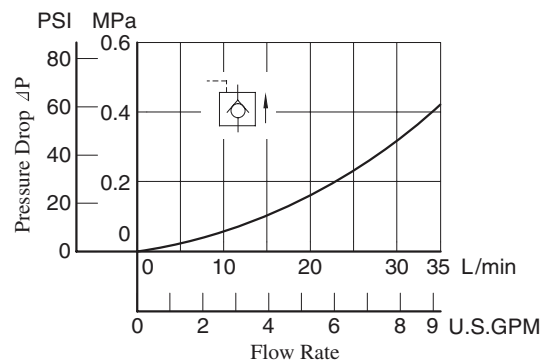
### Typical Performance Characteristics

Hydraulic Fluid: Viscosity 35 mm<sup>2</sup>/s (164 SSU),  
Specific Gravity 0.850

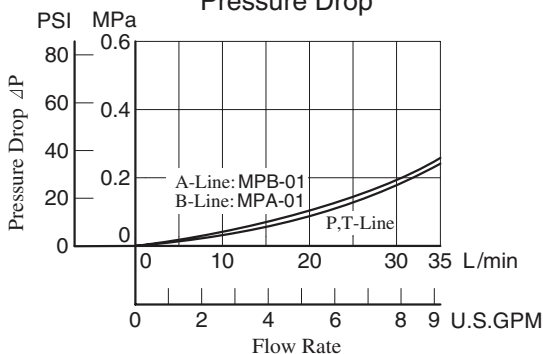
#### Pressure Drop for Free Flow



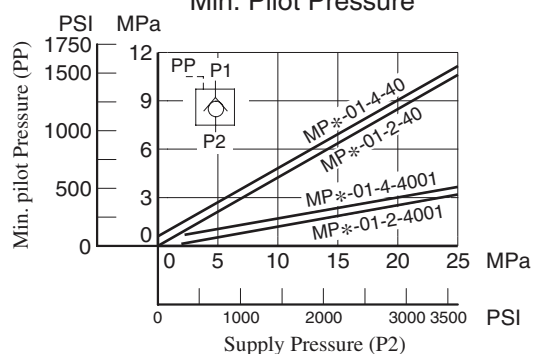
#### Pressure Drop for Reversed Controlled Flow



#### Pressure Drop



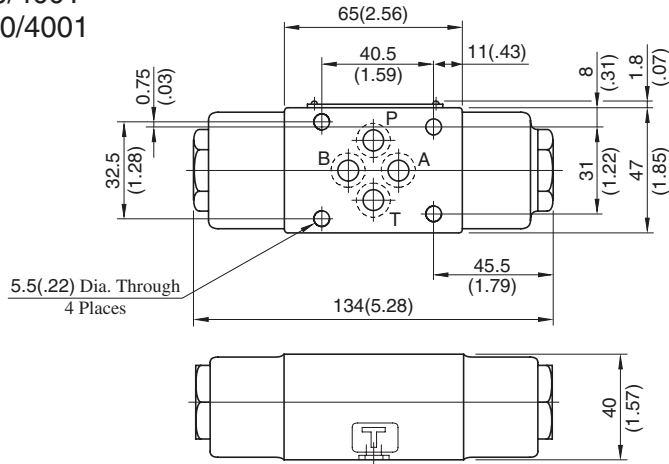
#### Min. Pilot Pressure



F  
01 Series Modular Valves

MPA-01-\*-40/4001  
 MPB-01-\*-40/4001  
 MPW-01-\*-40/4001

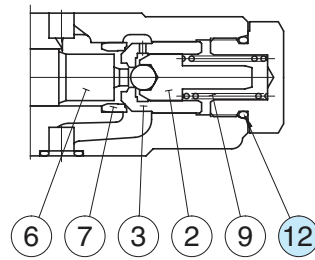
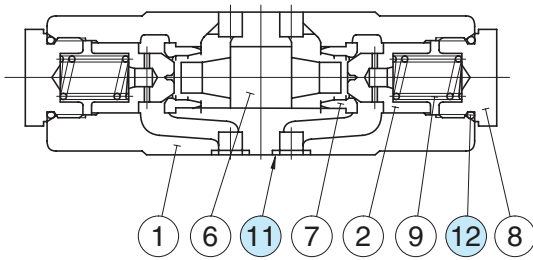
**DIMENSIONS IN  
 MILLIMETRES (INCHES)**



Approx. Mass..... 1.2 kg (2.6 lbs.)

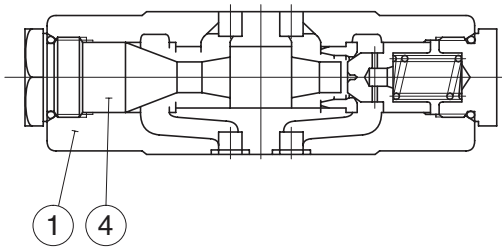
■ Spare Parts List

MPW-01-\*-40

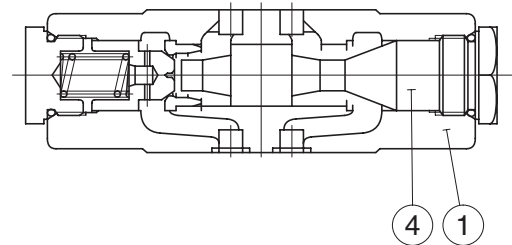


Low Pilot Pressure Control Type  
 (MPW-01-\*-4001)

MPA-01-\*-40



MPB-01-\*-40



● List of Seals

Item	Name of Parts	Part Numbers	Qty.	Remarks
11	O-Ring	SO-NB-P9	4	Included in Seal Kit Kit No.: KS-MAC-01-30
12	O-Ring	SO-NB-P18	2	