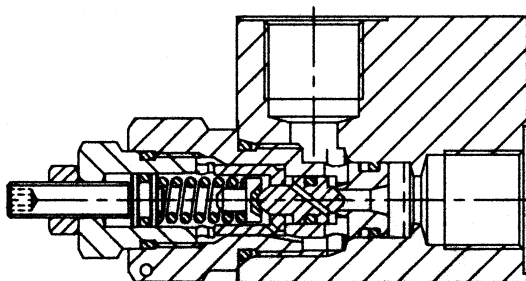
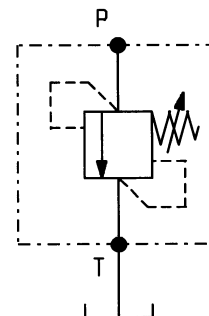
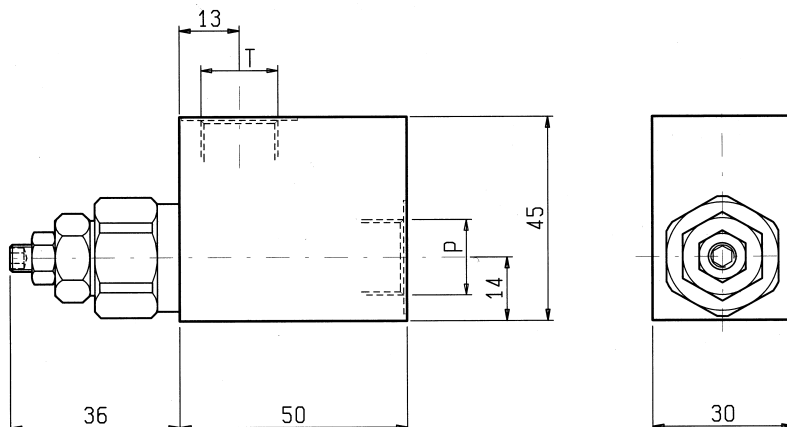


VSC-20

05.13.07 - X - Y - Z

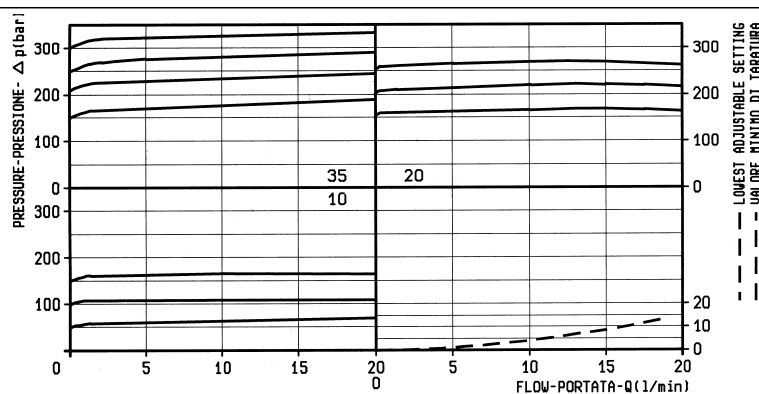


DATI TECNICI / TECHNICAL DATA

Pressione di lavoro max. 350 bar
 Max. working pressure

Portata max. 20 l/min
 Flow max.

Peso 0.425 kg
 Weight



X REGOLAZIONI ADJUSTMENTS

03 vite esterna esagono incassato leakproof hex. socket screw

04 volantino e dado handknob and locknut

cappello per piombatura sealing cap codice / ordering code 03.05.01.002

MOLLE / SPRINGS

Z	Campo taratura min - max bar Adj. press. range bar	Incremento press. bar / giro vite Press. increase bar / turn	Taratura standard bar (Q = 5 l/min) Std. setting bar (Q = 5 l/min)	Cod. ordinazione Ordering code	Colore Colour
05	30-50	8	50	03.51.01.133	nero black
10	40-150	38	100	03.51.01.121	blu blue
20	80-210	77	200	03.51.01.122	verde green
35	150-350	146	350	03.51.01.132	giallo yellow

Y ATTACCHI / PORT SIZE

Y	P - T
02	G 3/8